

# **IPSWICH JUNIOR CHESS CLUB NEWSLETTER**

## **DECEMBER 2008**

### **Club Competition**

A very big thankyou to Tim Stevens for organising the Ipswich Junior Chess Club competition in November, to Julie Harker for organising the catering, and everyone who helped make this day a success.

### **Woodbridge Tournament**

Well done to all our players who took part in the tournament at Woodbridge School on Sunday 30<sup>th</sup> November. We had some really good results:

Joseph Boone	1 <sup>st</sup> in the U8 section with 6/6
Cathy Xu	2 <sup>nd</sup> in the U8 section with 5/6
Albert Xu	1 <sup>st</sup> in the U10 section with 6/6
Shivan Hirani	9 <sup>th</sup> in the U12 section with 3.5/6
Aabha Khetarpal	17 <sup>th</sup> in the U12 section with 2/6
Edward Harker	3 <sup>rd</sup> in the U14 section with 4/6
Aarzo Khetarpal	12 <sup>th</sup> in the U14 section with 1/6

Last but not least a mention for Tim Lunn, Adele Lunn and Abhay Khetarpel who finished 2<sup>nd</sup>, 5<sup>th</sup> and 12<sup>th</sup> in the Open Section where there was some strong competition.

Apologies if anyone has been missed, but well done everybody.

### **Ladder**

Many thanks to Paul Febvre for making the Ladder and organising the team challenges, which everyone is enjoying. A new ladder will start in the Spring Term!

### **Coaching**

Thanks go to Tim and Adele Lunn who have visited to do some coaching and to Paul for his continued support. Please remember to let us know if you have any particular problems so that the coaches can help you.

### **The 14<sup>th</sup> British Land Chess Challenge**

As a club we will be taking part in the land chess challenge again next year.

### **Membership**

I am happy to report that we have seen a small increase in the number of children attending chess club. This means there are more people to play and if you wish to take part in tournaments there is coaching available. If you know of anyone else who may be interested in attending the club please bring them along or give them our contact numbers.

Although our club is still small compared to others we have some good established players and some up and coming young players who I'm sure will be very successful in the future.

# **IPSWICH JUNIOR CHESS CLUB NEWSLETTER**

## **DECEMBER 2008**

### **Parents Rota**

A new parents rota is now available for the spring Term. We really do rely on parent helpers for the running of the club. It doesn't matter if you can't play chess! If for any reason you cannot attend the date you have been given please try and swap with another parent and let the organisers know so that we can ensure a smooth running of the club.

### **Christmas**

The last week of the club before the Christmas break is 13<sup>th</sup> December and we will be returning on Saturday 10th January 2009.

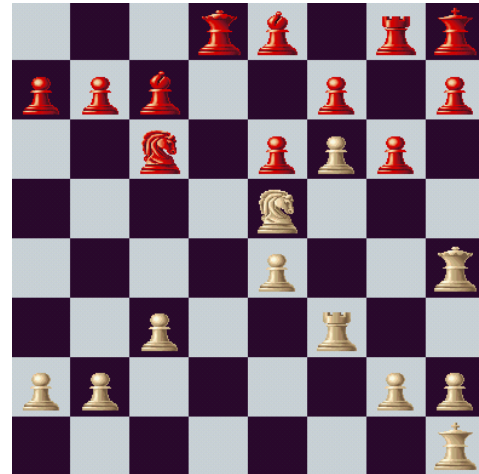
### **Puzzles**

#### **Beginner Puzzle No 1.**



**Black to play and win in one move!**

#### **Intermediate Puzzle No 1.**



**White to play and win in two moves**

### **Mini Game**

Where did black go wrong?

1. e4 e5
2. Nf3 Nc6
3. Bb5 Nge7
4. c3 d6
5. d4 Bd7
6. O-O Ng6
7. Ng5 h6
8. Nxf7 Kxf7
9. Bc4+ Ke7
10. Qh5 Qe8
11. Qg5+ hxg5
12. Bxg5#

### **Your Committee**

If you have any comments or questions concerning the club please let one of us know. If anyone is interested in joining the committee you are more than welcome.

Chairman:	Paul Febvre	01473 726911 or 07728 636493
Secretary:	Liz Oakley	0770 998 2456
Treasurer:	Julie Harker	01473 435944 or 07915 667770
Resources/Membership:	Adele Lunn	
Tournament Advisor:	Tim Stevens	